

## What is Konica Minolta Optimized Print Services?

An "end-to-end solution" utilizing *opt-WORKFLO*, that provides the necessary services required to control your output costs.



Additional **opt** software components

### opt-MONITOR

Assess your current printing environment, provide timely proactive maintenance, ongoing assessment and optimization

### opt-ANALYZE

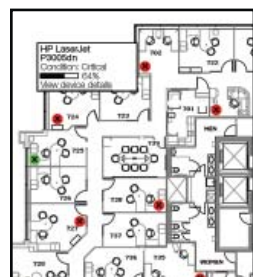
Creates a cost-per-print plan that covers consumables and service

### opt-VISUALIZE

Develops a comprehensive floor plan to replace outdated hardware

### opt-MANAGE

Gives your organization control over print routing



Konica Minolta's Optimized Print Services allows you to optimize business processes and revolutionize the way you manage your fleet of printers and MFPs.

### Supplies when you need them

We deliver all of your consumable needs. There's no need to order supplies or store additional inventory.

Optimized Print Services provides you with automated supplies replenishment on designated alerts. Your supplies will be delivered directly to your location.

### Timely proactive maintenance

Konica Minolta's team of certified technicians will assume responsibility for ongoing support for your printing environment. Proactive maintenance allows you to earn a greater return on your printer investment by avoiding higher cost per call service, improving productivity, and reducing IT help desk calls. You can choose from genuine OEM or OPS supplies to ensure your equipment delivers optimum print quality and total dependability. As a result, you'll achieve the full value of your printing environment.

### Enhanced worker mobility

To improve the productivity of your entire workforce, *opt-VISUALIZE* can provide a comprehensive floor plan creating the most effective use of new and existing equipment. Employees gain seamless access to net-worked printers and MFP's -- allowing them to work more efficiently.



KONICA MINOLTA

## Optimized Print Services

A fully customized solution that will assess your document and print environment, optimize your document workflow, and reduce maintenance costs to improve your document output.



Can you afford not to contact Konica Minolta today?

For more information, visit us at  
[www.kmbs.konicaminolta.us/services](http://www.kmbs.konicaminolta.us/services)



KONICA MINOLTA

KONICA MINOLTA  
BUSINESS SOLUTIONS U.S.A., INC.  
100 Williams Drive  
Ramsey, NJ 07446

## Is your document system working for you... or against you?

Technologies have advanced. Needs have changed. But chances are, your printing environment is a patchwork of printing and imaging devices that don't work together, aren't utilized, managed, or serviced to keep up with today's business world. Ask yourself these questions:

### Are you efficient?

Many older printers do not meet today's energy star guidelines, so they use more power to operate and generate higher running costs — and the recycling of toner cartridges needs to be simple.

### Are you out of date?

Instead of a mix of printers and MFPs purchased ad hoc, you need a flexible design that changes with your business needs. The reality is, maintaining an accurate equipment inventory is a challenge!

### Are you productive?

Equipment that doesn't get the job done can keep your staff from obtaining the quality and performance they require -- which leads to lower productivity levels.

### Are you properly maintained?

Devices acquired at various times from multiple sources can lead to ongoing service and maintenance hassles:

- multiple support agreements
- multiple processes to place service calls
- IT resources taxed with configuration and network updates
- valuable real estate is used to inventory supplies from various manufacturers

### Are you efficiently managed?

Roughly 40% of all IT help desk calls are print-related caused by poor usage control, inefficient ordering of supplies and errors that aren't accurately diagnosed or reported.

If these problems sound familiar, then you can benefit from Konica Minolta's Optimized Print Services.

## Optimized Print Services can do it all - *and do it better.*

### Conserve\_

Konica Minolta's Recycling Program is committed to protecting the environment - and dedicated to recycling the cartridges collected, with no cartridge materials entering landfills. Our Optimized Print Services Program makes cartridge return easy by providing a central collection center for laser cartridges and utilizes the most advanced recycling methods. Konica Minolta's latest MFP and printer toner production processes reduces CO<sub>2</sub>, NO<sub>x</sub> and SO<sub>x</sub> emissions, which help reduce global warming and acid rain, up to 40%.\*

\* Applicable to Konica Minolta MFP and Printers only.



### Compete\_

IDC conducted a recent study that confirmed considerable cost savings to organizations that effectively optimized their print environment. They calculated that a business could achieve significant savings and productivity benefits.

- 23% average overall cost savings
- 40% reduction in IT help desk calls
- 25% cost reduction in consumables
- 20% cost reduction in unscheduled maintenance
- 10% cost reduction in installation and upgrades
- 5% cost reduction in acquisition



## Optimized Print Services can make all the difference.

Konica Minolta's Optimized Print Services (OPS) program allows you to customize a total solution for Konica Minolta bizhub MFPs and desktop printers and OEM desktop printers, by choosing from an array of support options that meet the specific needs of your business.

### The OPS program covers all the basics:

- Supplies: automated supplies replenishment
- Recycling: Konica Minolta's Recycling Program provides collection boxes that are returned to our Cartridge Recycling Center
- Support: access to Konica Minolta's customer support center
- Service: Konica Minolta's team of certified technicians will assume responsibility for servicing your printing environment
- Management: web-based management tool
- Sites: multi-site implementation
- Status: tracking and reporting



### The OPS program can be customized to cover:

- On-site support and print server management
- Device floor planning
- Print management consulting
- Flexible leasing plans

### Customized workflow to further enhance your business:

- opt-WORKFLO professional services and solutions provide additional business process improvements and cost savings
  - Scalable Document Management Systems
  - Rules Based and Distributed Printing
  - IPDS data conversion to MFPs



### Control\_

*opt-MONITOR* manages your total printing environment, including Konica Minolta MFPs, networked and non-networked printers. Because every business is different, *opt-MONITOR* adapts to your business needs.

With Optimized Print Services, your IT staff will have more time to improve network productivity and your help desk will have fewer calls regarding print problems. Optimized Print Services stream-lines your accounts payable process by creating a single source for all your consumables, support, and service. You have one monthly payment for your total printing costs and can proactively budget for printing expenses.

These savings will insure that your output devices do not negatively impact the bottom line, allowing you to focus on staying competitive in your core business.

